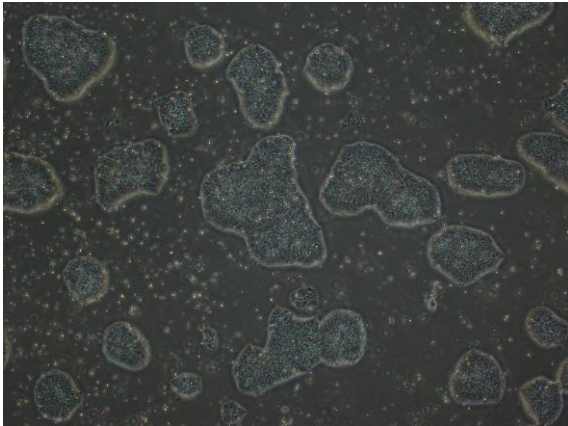
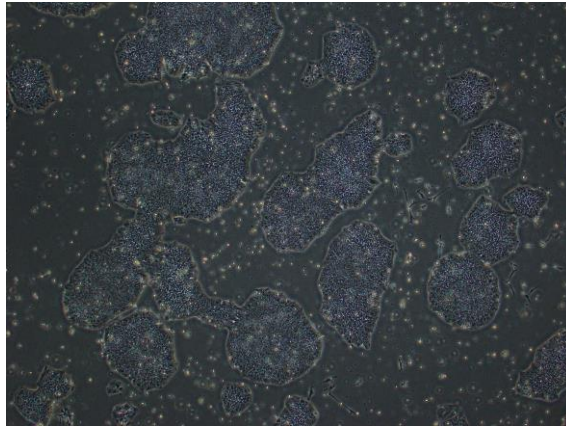


【 CiRA-j-1624 】 Morphology of iPSC colonies

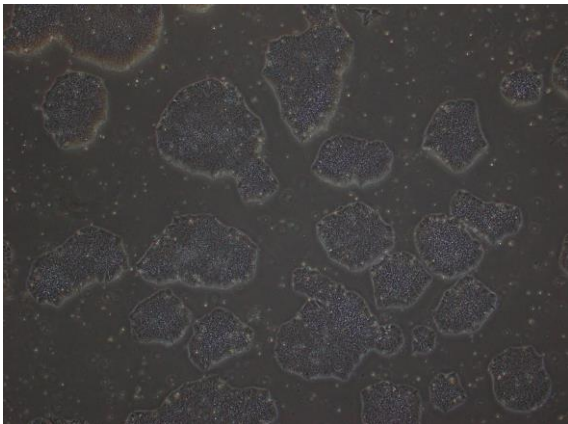
CiRA-j-1624-A: passage-3



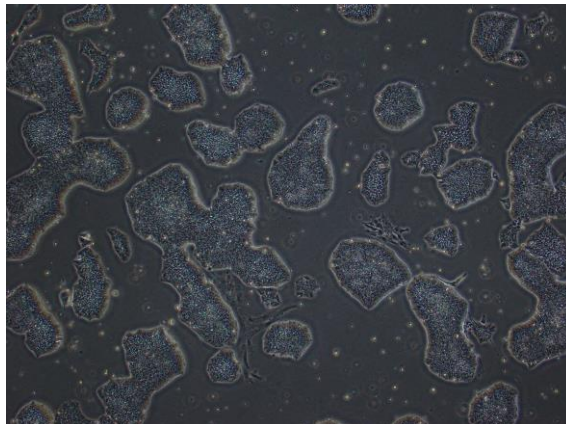
CiRA-j-1624-B: passage-3



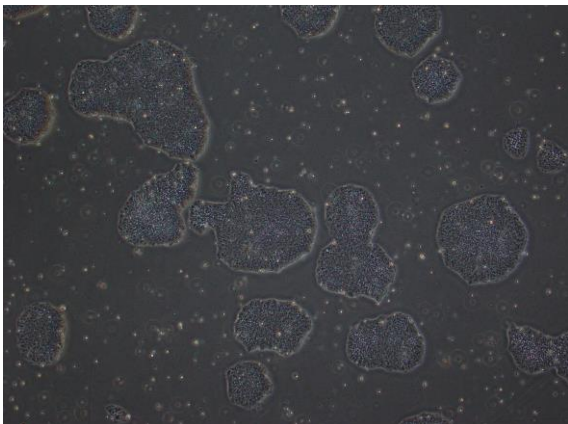
CiRA-j-1624-C: passage-3



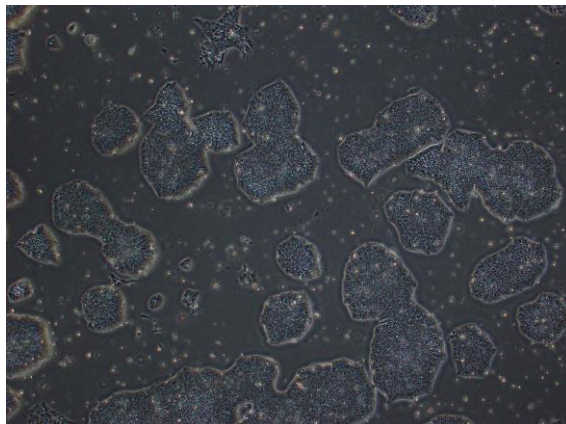
CiRA-j-1624-D: passage-3



CiRA-j-1624-E: passage-3



CiRA-j-1624-F: passage-3



(All images were captured at 4x magnification)